

# Elliptic Anemometer & Weather Station Quick Start Guide

by Barani Design

1

INSTALL "atmo"  
DATA LOGGER SOFTWARE  
FROM CD ONTO YOUR  
COMPUTER



REQUIRED HARDWARE for this Guide:

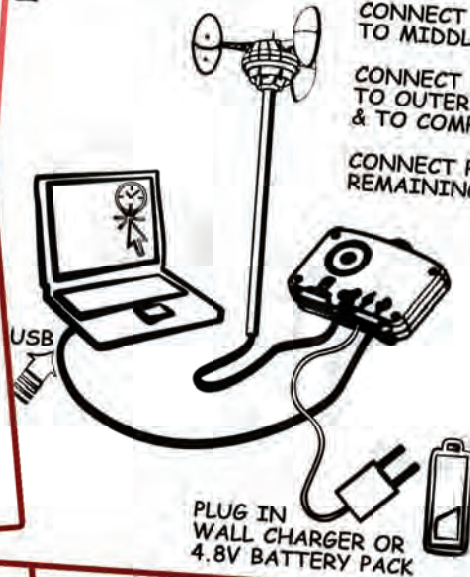
1. Computer running Windows 7/Vista/XP/2000
2. atmo installation CD
3. Daisy Chain Data Logger
4. Elliptic Anemometer or Weather Station
5. USB-A to USB-micro-B cable
6. 5V Wall Power Supply or 4.8V Battery pack

2

CONNECT SENSOR  
TO MIDDLE PORT.

CONNECT USB CABLE  
TO OUTER PORT  
& TO COMPUTER.

CONNECT POWER TO  
REMAINING PORT.



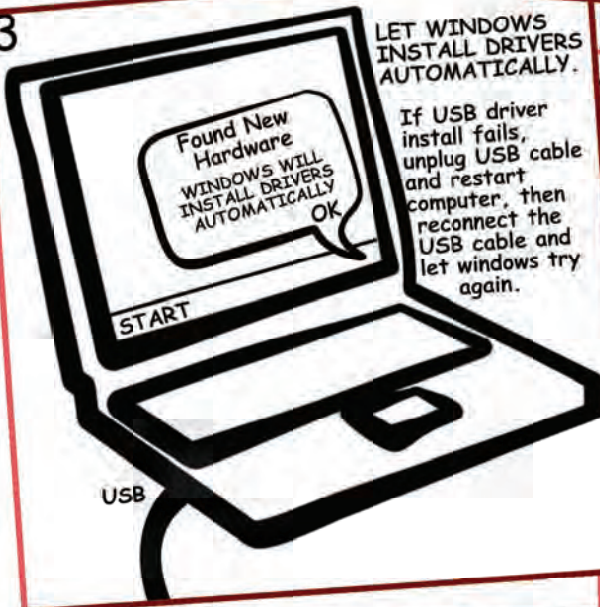
PLUG IN  
WALL CHARGER OR  
4.8V BATTERY PACK

3

LET WINDOWS  
INSTALL DRIVERS  
AUTOMATICALLY.

Found New  
Hardware  
WINDOWS WILL  
INSTALL DRIVERS  
AUTOMATICALLY  
OK

If USB driver  
install fails,  
unplug USB cable  
and restart  
computer, then  
reconnect the  
USB cable and  
let windows try  
again.

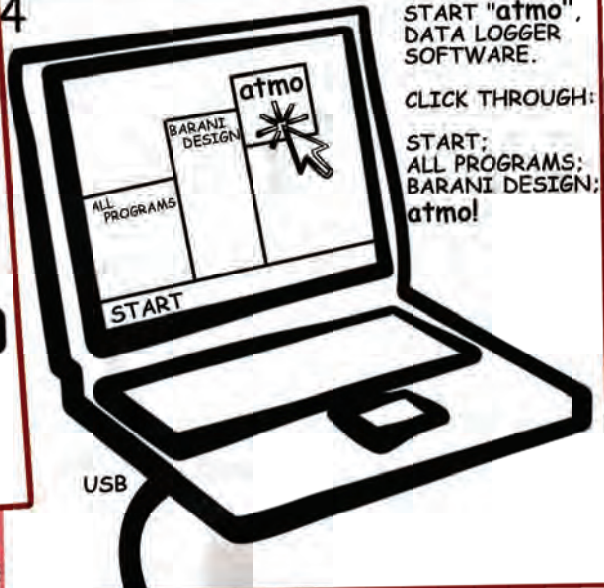


4

START "atmo",  
DATA LOGGER  
SOFTWARE.

CLICK THROUGH:

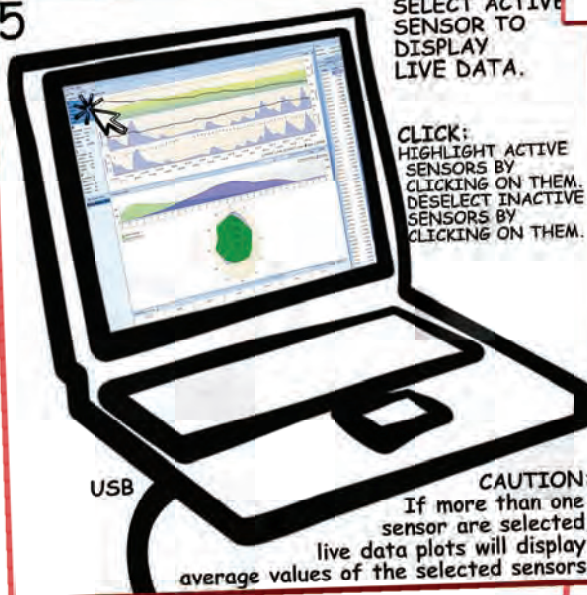
START:  
ALL PROGRAMS;  
BARANI DESIGN;  
atmo!



5

SELECT ACTIVE  
SENSOR TO  
DISPLAY  
LIVE DATA.

CLICK:  
HIGHLIGHT ACTIVE  
SENSORS BY  
CLICKING ON THEM.  
DESELECT INACTIVE  
SENSORS BY  
CLICKING ON THEM.



USB

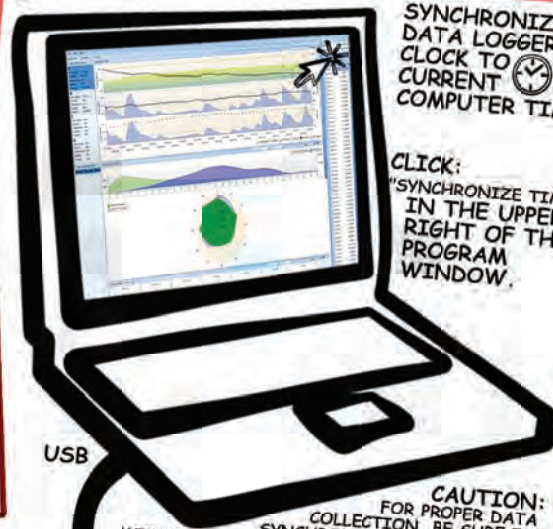
CAUTION:

If more than one  
sensor are selected,  
live data plots will display  
average values of the selected sensors.

6

SYNCHRONIZE  
DATA LOGGER  
CLOCK TO  
CURRENT  
COMPUTER TIME.

CLICK:  
"SYNCHRONIZE TIME"  
IN THE UPPER  
RIGHT OF THE  
PROGRAM  
WINDOW.



USB

CAUTION:

FOR PROPER DATA  
COLLECTION, BE SURE TO  
SYNCHRONIZE COMPUTER TIME  
WITH OFFICIAL TIME FROM <http://www.time.gov>  
BEFORE SYNCHRONIZING DATA LOGGER CLOCK.